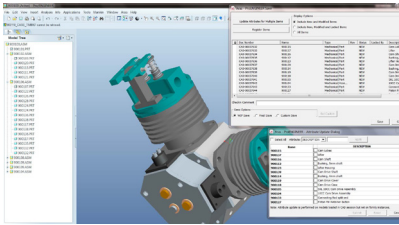
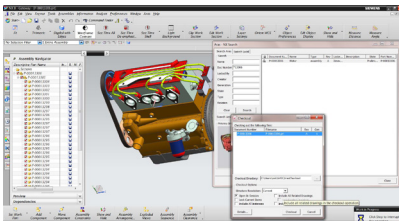


# ITI Solution: Creo and NX Connector for Aras Innovator

## The Aras Innovator integration partner that customers trust



Creo Connector for Aras Innovator



NX Connector for Aras Innovator



When you have a complex PLM integration project, you need an experienced partner who can move your project forward efficiently and securely. ITI brings more than 30 years of experience developing PLM, CAD and ERP integrations under vendor and/or OEM agreements with the major PLM vendors.

### ITI delivers value for PLM/CAD integration

The Creo (ProENGINEER) and NX Connectors with Aras Innovator are developed by ITI and sold by Aras PLM.

ITI's connectors provide a bridge between Creo and NX as the design system and Innovator as the system of record. Our connectors improve efficiency while enabling users to focus on product development. In addition, users are able to manage data with Innovator with minimal effort, referring to clients only for virtual paperwork such as sign-offs and ECO processing.

By using Innovator as a CAD neutral format, downstream users are given direct access to data when appropriate without interrupting the CAD users. And since the connectors follow all rules established in Innovator, groups such as Manufacturing, Procurement and Production can seamlessly consume Creo and NX data downstream without disrupting corporate Innovator practices.

Our proven integration implementation approach has been used by hundreds of customers, representing over 20,000 licenses worldwide.

### Integration Features

- Create new
- Save-as (clone)
- Rename
- Check-in/Check-out
- Attribute synch
- PLM change status/refresh
- Named baseline (establish and retrieve)
- E-BoM synch
- Derived output (2D drawing viewing)
- Derived output (3D model viewing)
- Lifecycle Mgt. (promote, demote, release)
- Revise

### About ITI, a Wipro company

ITI is the global leader providing reliable interoperability, validation, and migration solutions for product data and related systems.

ITI solves complex product data interoperability problems so the world's leading manufacturers can focus on making great products.

ITI is a wholly owned US-based subsidiary of Wipro, Ltd, within the Industrial & Engineering Services (IES) business. IES provides customers with a platform to innovate and engineer the next generation of products and platforms at scale.

www.iti-global.com  
info@iti-global.com  
1-800-783-9199

5303 DuPont Circle  
Milford, OH 45150  
USA

