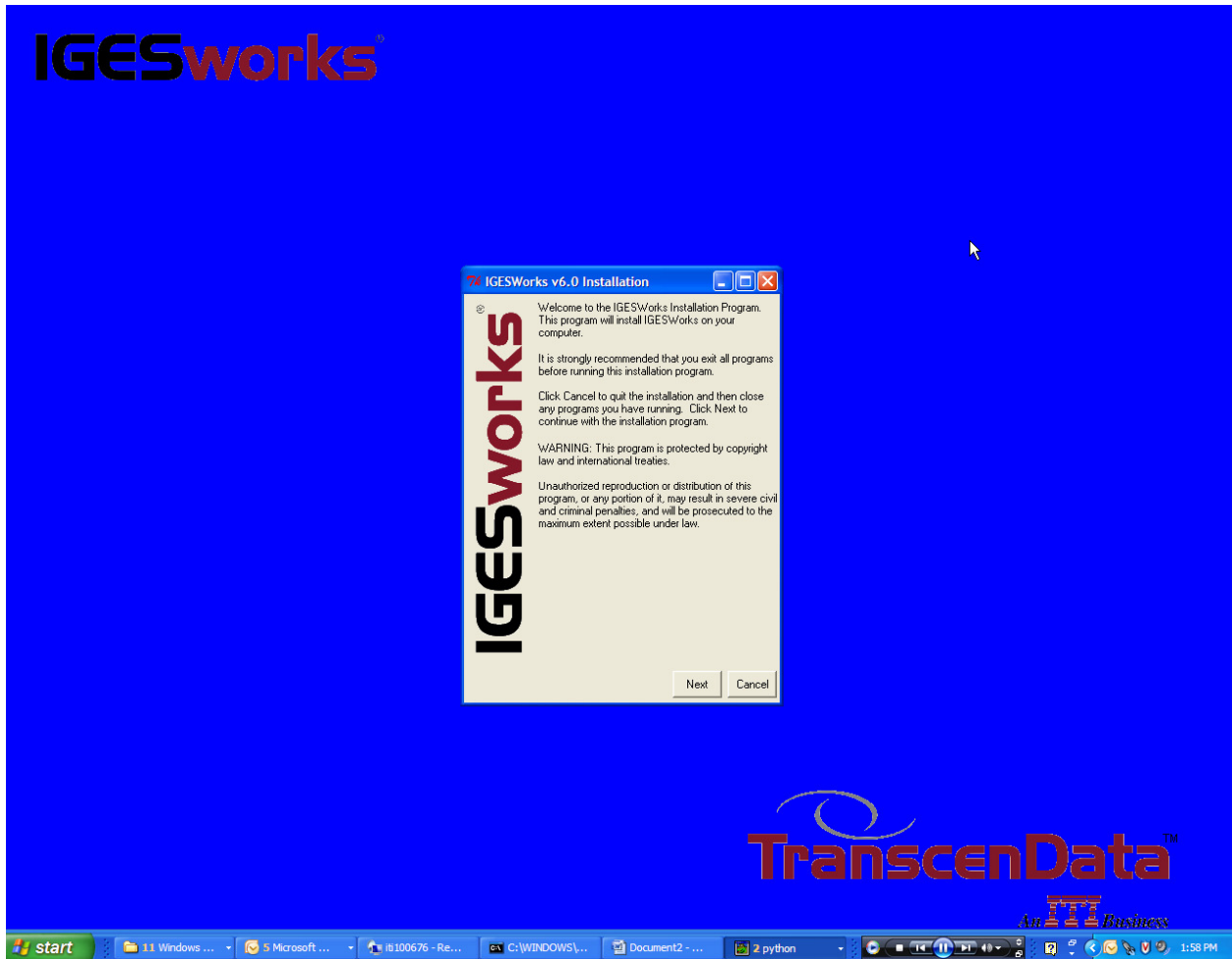


# IGESWorks Installation Guide



NEXT

# IGESworks



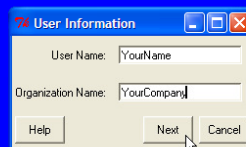
# TranscenData™

AN IBM BUSINESS



AGREE

# IGESworks<sup>®</sup>



A dialog box titled "User Information" with a blue header bar. It contains two text input fields: "User Name:" with the text "YourName" and "Organization Name:" with the text "YourCompany". Below the fields are three buttons: "Help", "Next", and "Cancel". A mouse cursor is pointing at the "Next" button.

# TranscenData<sup>™</sup>

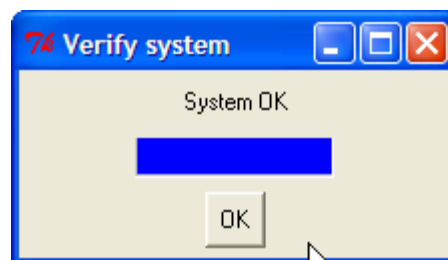
ANALYTICAL BUSINESS



Type in your name and Company (not critical)

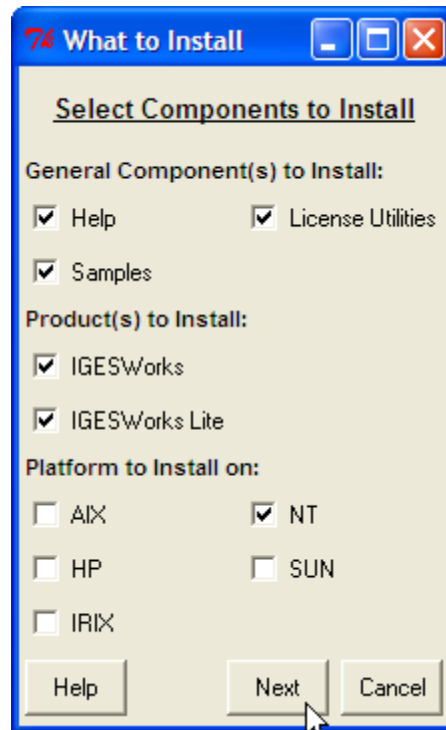
NEXT

It will Check your system



A dialog box titled "Verify system" with a blue header bar. The main area contains the text "System OK" above a solid blue horizontal bar. Below the bar is an "OK" button. A mouse cursor is pointing at the "OK" button.

OK

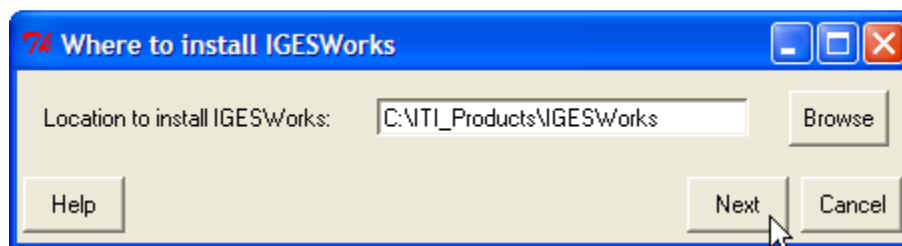


Make sure to check at least on Product

And your correct Platform

Windows = NT

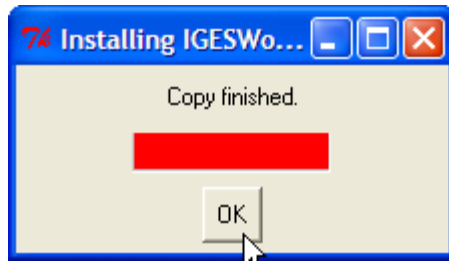
NEXT



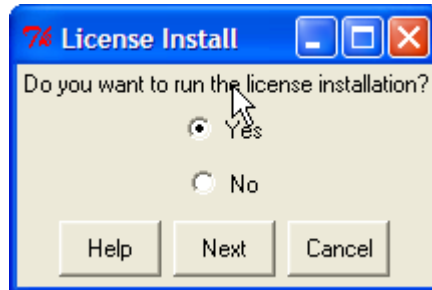
Select the place where to Install

RECOMMEND folder without spaces use underscores instead

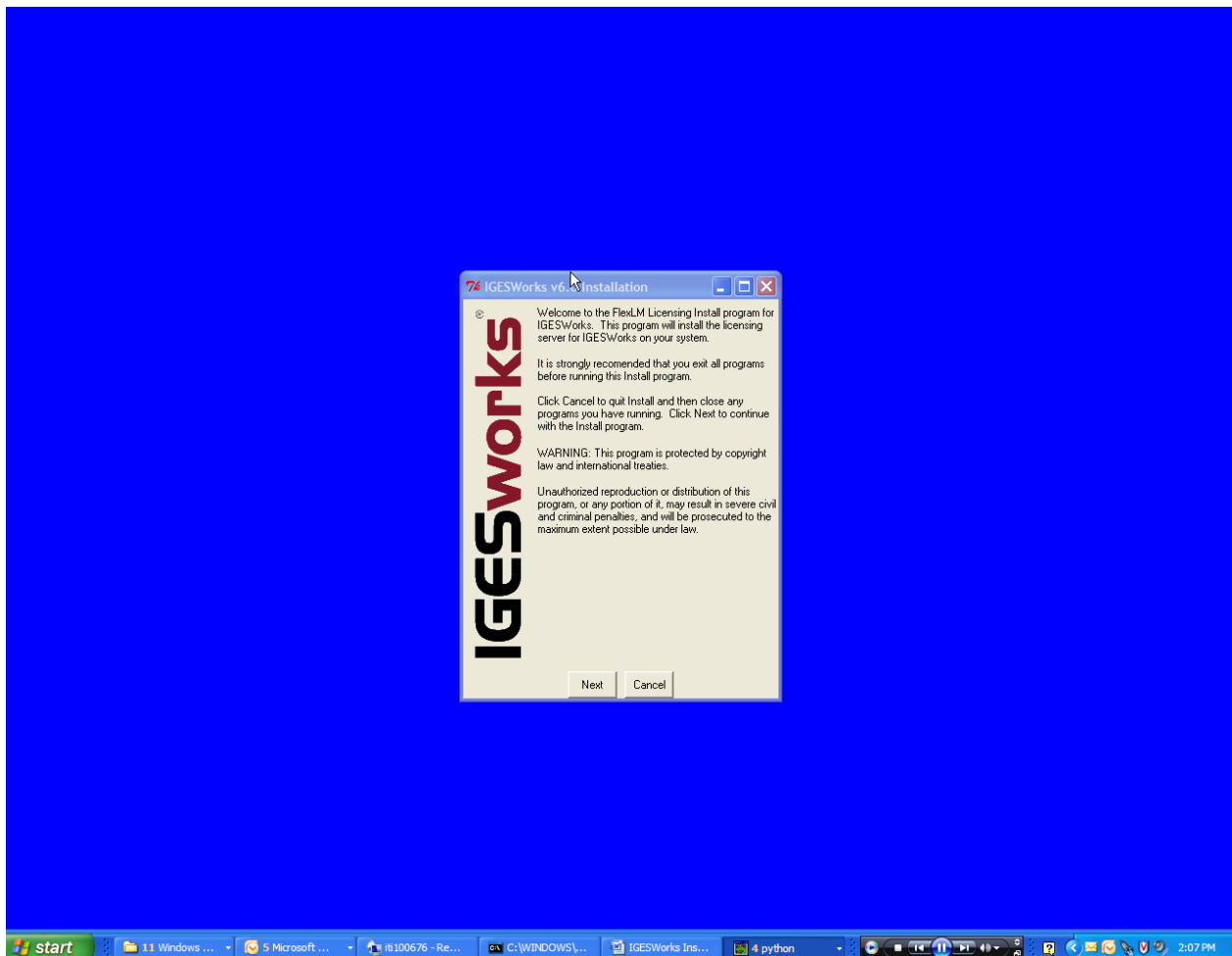
NEXT



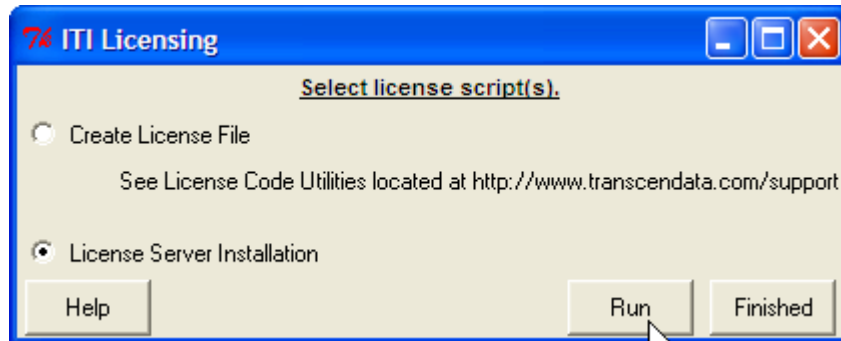
OK



YES NEXT

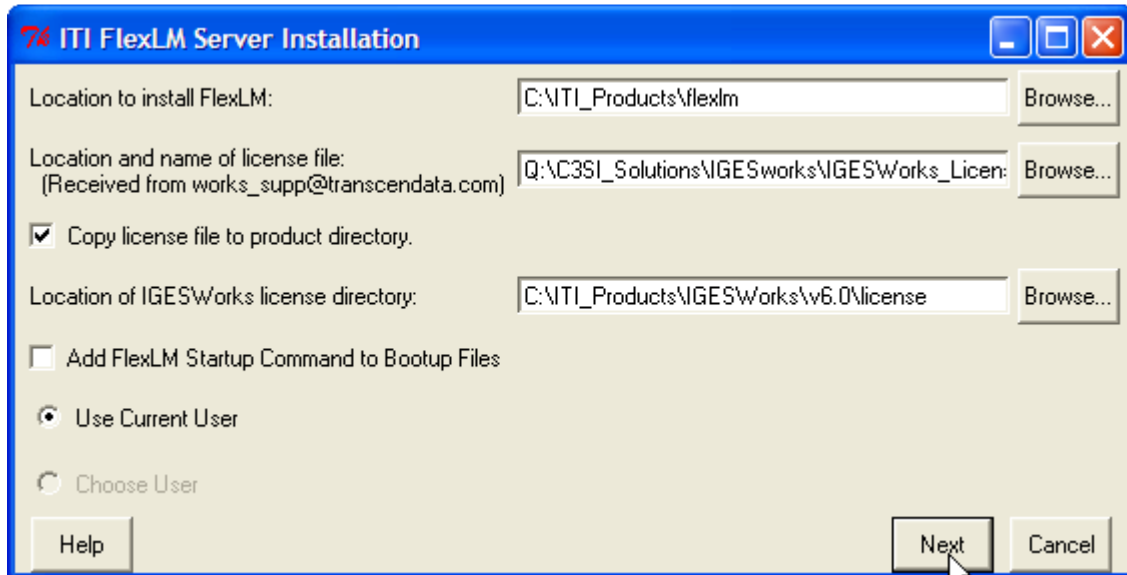


NEXT



Select License Server Installation

RUN



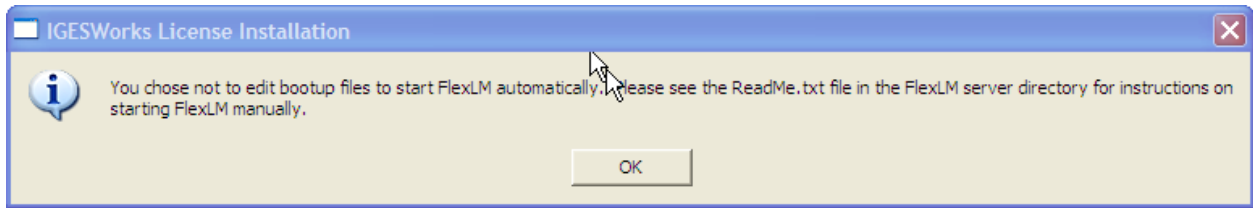
Select a location to put the license server files

Select the license file given to you by ITI

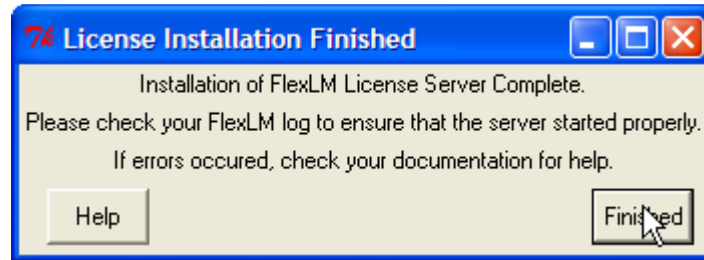
Make sure the location of IGESWorks license directory is correct

Uncheck Add FlexLM Startup Command to Bootup Files

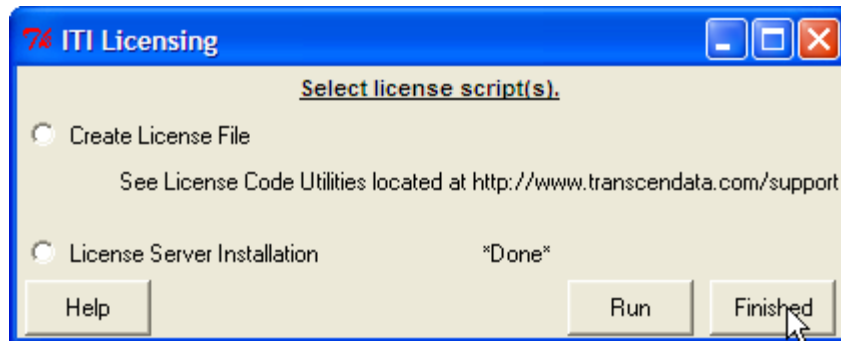
NEXT



OK



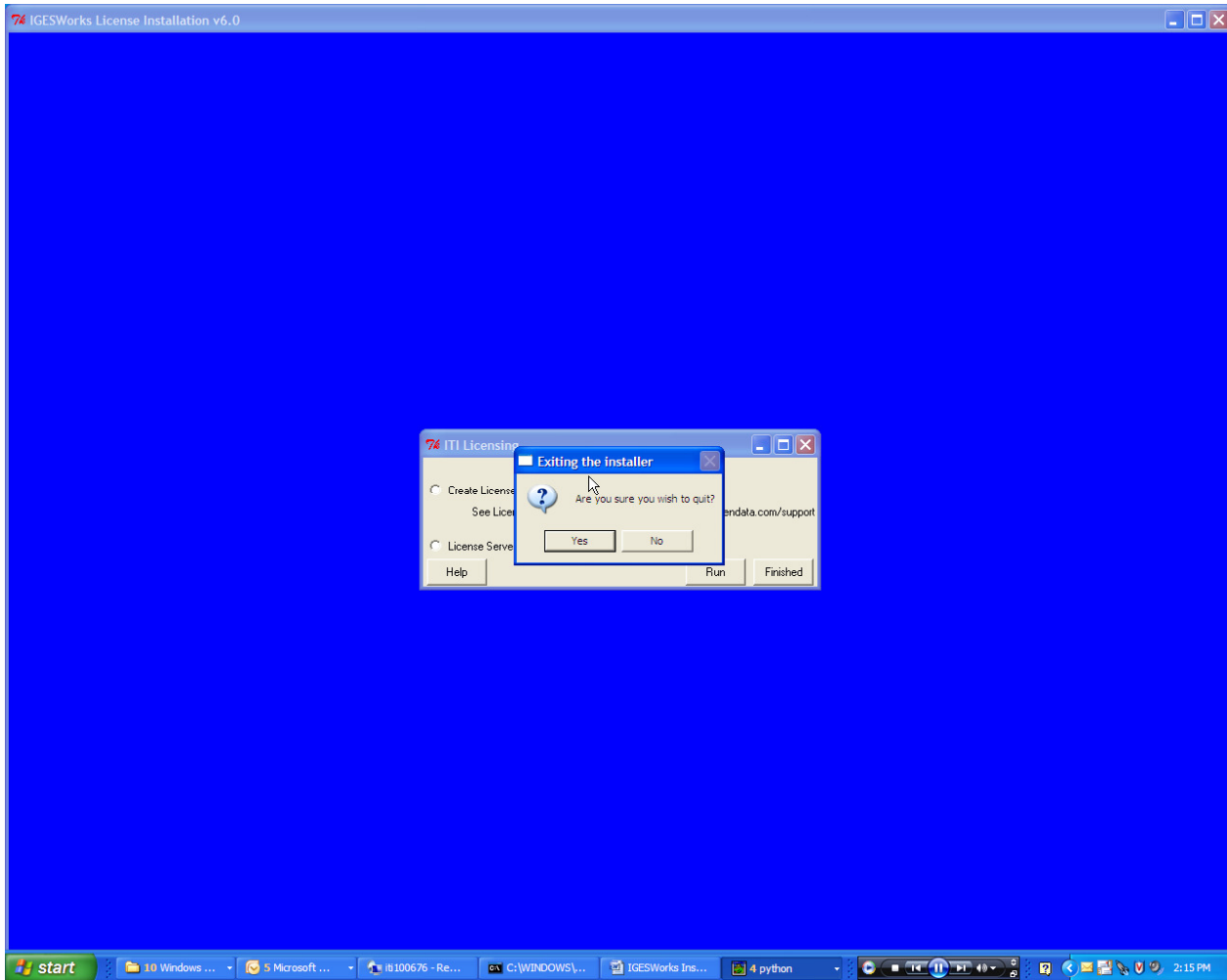
Finished



Finished

OK to any "ARE YOU SURE YOU WANT TO QUIT " messages

FINISH / OK any other windows



## START USING IGESWorks

