

ITI NEWS – FOR IMMEDIATE RELEASE

HD Hyundai Mipo Revolutionizes CAD Workflow with CADfix PPS from International TechneGroup, Inc.

Milford OH, July 16, 2024 - [HD Hyundai Mipo](#), a leading figure in the maritime industry, announces a groundbreaking advancement in their CAD workflow with the successful implementation of CADfix PPS from [International TechneGroup, Inc.](#) (ITI), a leader in PLM interoperability solutions. This innovative solution has revolutionized the integration of large MCAD equipment models into their marine design system, marking a significant milestone in streamlining operations and enhancing efficiency.

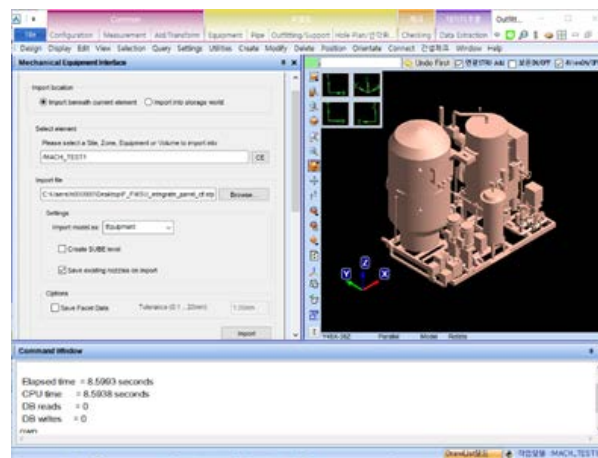


Fig. 1: Simplified STEP files integrated into HD Hyundai Mipo's design system

Facing challenges in efficiently importing large STEP files from equipment suppliers, HD Hyundai Mipo sought a solution to mitigate import failures and project delays. With manual remodeling proving time-consuming and costly, HD Hyundai Mipo turned to CADfix PPS for a transformative solution.

CADfix PPS enabled HD Hyundai Mipo to simplify large STEP files while preserving critical design elements, optimizing file sizes, and facilitating seamless integration into their marine design system. The implementation of CADfix PPS not only eliminated the need for manual restructuring but also resulted in substantial cost savings of at least \$30,000 annually.

"Our collaboration with HD Hyundai Mipo and their adoption of CADfix PPS represents a pivotal advancement in efficiency and productivity," said Andy Chinn, Director at International TechneGroup, Inc. *"The streamlined CAD model simplification process has not only saved valuable time and resources for HD Hyundai Mipo but has also strengthened collaboration with equipment suppliers and expedited project timelines."*

Jaesun Lee, Engineer at HD Hyundai Mipo, commented, *"CADfix PPS is the best simplification tool for utilizing large STEP files within a shipbuilding CAD system. By purchasing CADfix PPS, we were able to bypass remodeling tasks within the shipbuilding CAD system based on 2D drawings, leading to significant reductions in associated time and costs."*

"CADfix PPS a flagship product from ITI, part of Wipro Engineering Edge, brings significant value, innovation and productivity in addressing integration of large MCAD equipment models into HD Hyundai Mipo marine design system" said Basavaraj Satanal, Global Head Industry 4.0.

The success of CADfix PPS at HD Hyundai Mipo highlights its efficacy in optimizing design workflows and reducing costs associated with the remodeling process. Moving forward, HD Hyundai Mipo remains committed to leveraging forward-thinking solutions to further enhance productivity and breakthrough in the maritime industry.



Contact: Justin Falkenstein
ITI, a Wipro company
Phone: 1-888-783-9199
Email: justin.falkenstein@iti-global.com

5303 DuPont Circle
Milford, OH 45150
www.iti-global.com

About ITI, a Wipro company

International TechneGroup, Inc. (ITI) part of Wipro Engineering Edge, specializes in conversion, integration, validation and migration solutions for product data and related systems. Our customers recognize the value of having a trusted solution partner that provides more than just software. ITI solves complex product data interoperability problems so that the world's leading manufacturers can focus on making great products. In 2019, ITI became a wholly owned subsidiary of Wipro Limited and now operates within the Wipro Engineering Edge business that provides customers with a platform to innovate and engineer the next generation of products and platforms at scale.

www.iti-global.com

About HD Hyundai Mipo

HD Hyundai Mipo was founded in 1975 as a repair and conversion shipyard, transformed into the Shipbuilding Project in the late 1990s, and currently holds the number one global market share in the small and medium-sized shipbuilding industry. With a total area of 1.8 million square meters, the company is equipped with three 400,000-ton dry docks and one 350,000-ton dry dock, 3.28km of quay, more than 20 large cranes, and various advanced automation facilities. HMD leads the eco-friendly smart ship market through continuous development of new technologies, contributing to the national and local economic growth, exploring new values in the marine industry, and pioneering the future of humanity.

www.hd-hmd.com